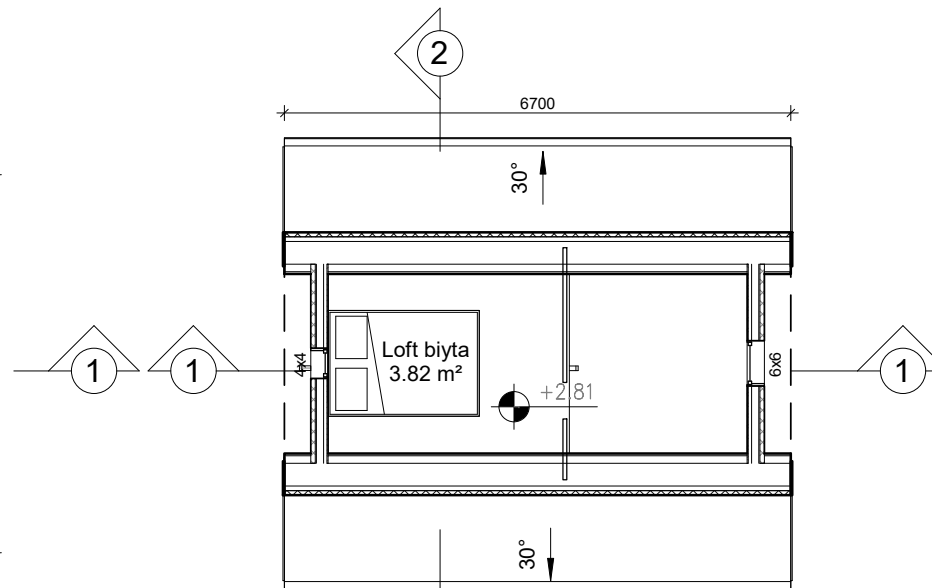
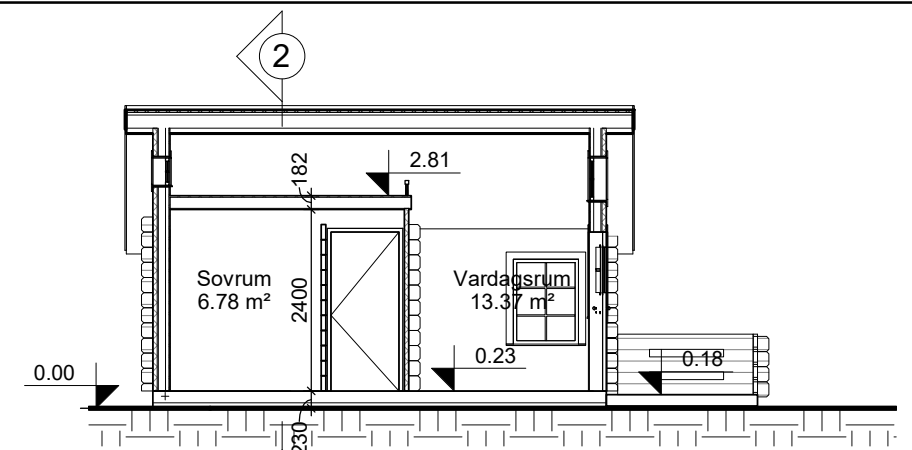


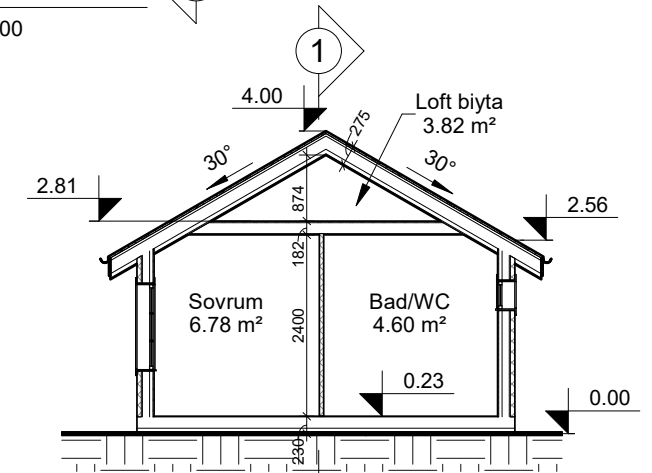
1 Marknivå  
1 : 100



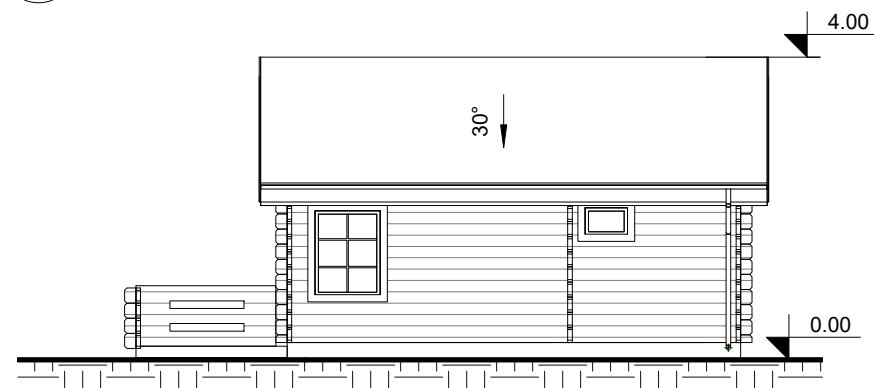
2 Övre plan  
1 : 100



3 Sektion 1  
1 : 100



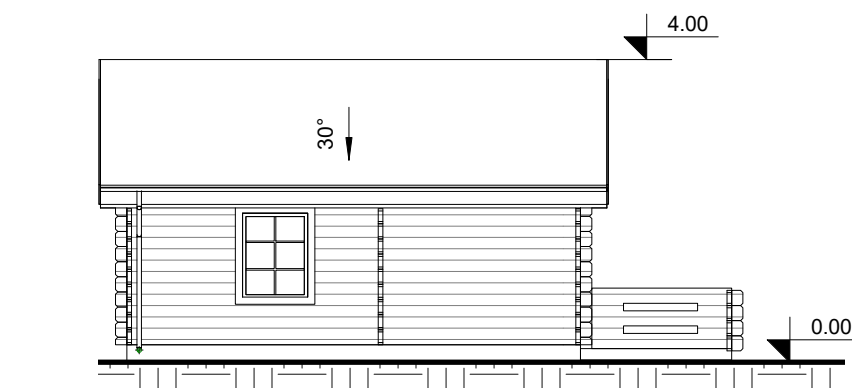
4 Sektion 2  
1 : 100



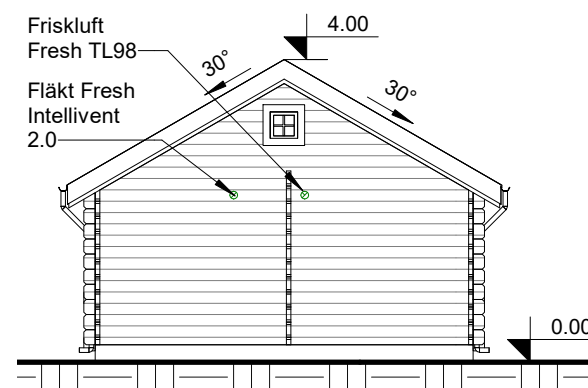
6 Fasad 2  
1 : 100



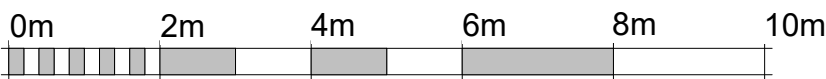
5 Fasad 4  
1 : 100



8 Fasad 1  
1 : 100



9 Fasad 3  
1 : 100



VISUELL SKALA 1:100 @ A3

**Takkonstruktion**

- Lindab plåttak
- 30mm luftspalt
- Vindfolie Masterplast 3 ECO
- 150x50mm regelkonstruktion + Isover mineralull
- 50x50mm regelkonstruktion + Isover mineralull
- Diffusionsspärr Isoflex alu pz
- 15x120 TGV 4019 innerpanel furu

**Yttervägg konstruktion 228mm**

- Yttervägg konstruktion 228mm
- 58x195mm Svensk Furu knuttimmer
- 15mm luftspalt
- Vindfolie Masterplast 3 ECO
- 95mm regelkonstruktion + Isover mineralull 95mm
- 45mm regelkonstruktion + 45mm Isover mineralull
- Diffusionsspärr Isoflex alu pz
- 15x120 TGV 4019 innerpanel av Svensk furu

**Innervägg: 58mm**

- 58x195mm Svensk Furu knuttimmer

Byggarea: 5.0m x 6.0m = 30.00m<sup>2</sup>

**Boytor**

| Namn       | Area                 |
|------------|----------------------|
| Bad/WC     | 4.60 m <sup>2</sup>  |
| Vardagsrum | 13.37 m <sup>2</sup> |
| Loft biyta | 3.82 m <sup>2</sup>  |
| Sovrum     | 6.78 m <sup>2</sup>  |
|            | 28.57 m <sup>2</sup> |

AttefallHuset  
av Rosell & Clack AB

Ritn.nr. A1

Klassisk Loft 1  
PLAN, FASAD & SEKTIONS RITNINGAR

REV: 2020-01-24

Skala: 1 : 100 (A3)

RITAD AV: Attefallhuset.se