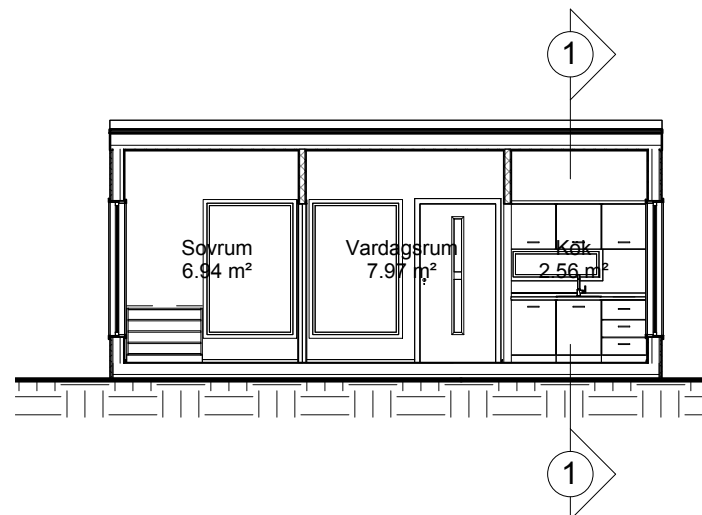
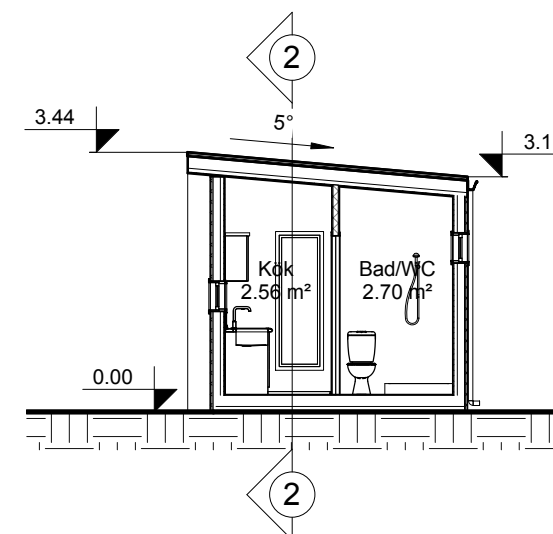


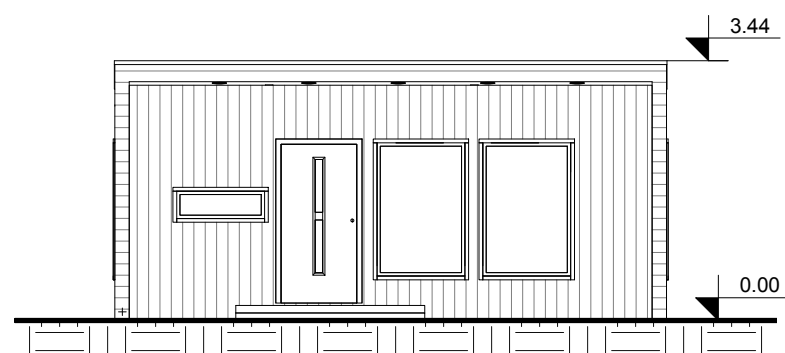
1 Marknivå
1 : 100



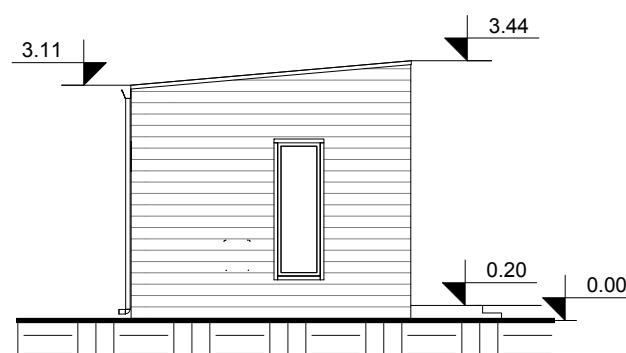
2 Sektion 2
1 : 100



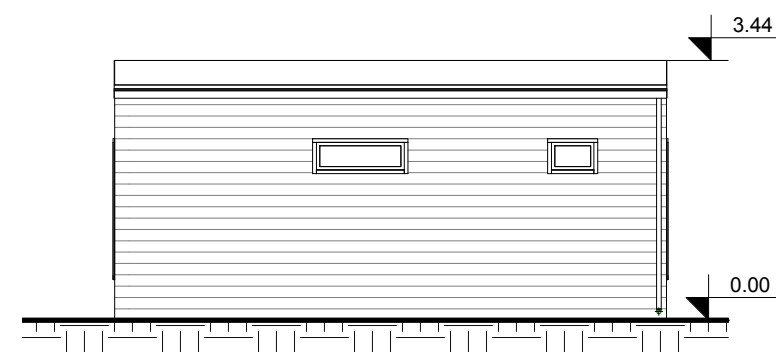
3 Sektion 1
1 : 100



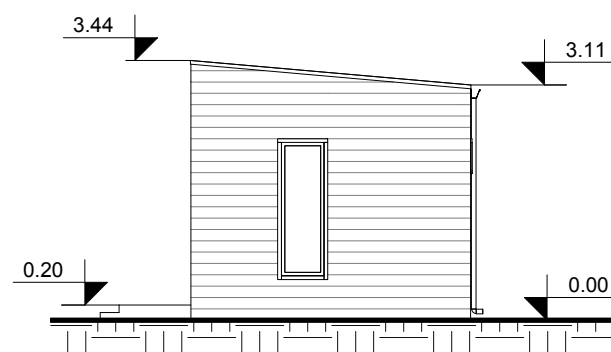
4 Fasad 1
1 : 100



5 Fasad 3
1 : 100



6 Fasad 2
1 : 100



7 Fasad 4
1 : 100



VISUELL SKALA 1:100 @ A3

Takkonstruktion

- Lindab plåttak
- 30mm luftspalt
- Vindfolie Masterplast 3 ECO
- 150x50mm regelkonstruktion + Isover mineralull
- 50x50mm regelkonstruktion + Isover mineralull
- Diffusionsspärr Isoflex alu pz
- 15x120 TGV 4019 innerpanel furu

Yttervägg konstruktion 192mm

- 22 mm 22x145 Sveden Dubbelfas panel
- 15mm luftspalt, Vindfolie Masterplast 3 ECO
- 95mm regelkonstruktion + Isover mineralull 95mm
- 45mm regelkonstruktion + 45mm Isover mineralull
- Diffusionsspärr Isoflex alu pz
- 15x120 TGV 4019 innerpanel furu

Innervägg 100mm

- 15x120mm TGV 4019 innerpanel furu
- 70mm regelkonstruktion+Isover mineralull
- 15x120mm TGV 4019 innerpanel furu

Byggarea: 3.4m x 7.3m =24.82m2

Boytor

Namn	Area
Vardagsrum	7.97 m²
Sovrum	6.94 m²
Bad/WC	2.70 m²
Kök	2.56 m²
	20.16 m²

Attefall Huset
av Rosell & Clack AB

Ritn.nr. A1

REV: 2016-02-15

Skala: 1 : 100 (A3)

RITAD AV: Attefallhuset.se

Premium 1
ENTRÉPLAN, SEKTION & FASADER